



News from the

Radcliffe Choral Society

November, 2008



Newies join RCS ranks at sing-ins!



RCSers serenade a chair for the scavenger hunt at retreat...



Lizzy Spira '11 and Natalie Feldman '12 enjoy an array of chocolate at the (now annual) RCS Chocolate Tasting Event

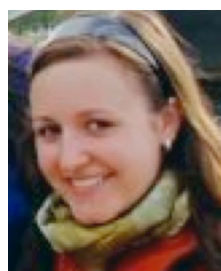


RCSers gather to hear from Jim, Erin and FRCS before performing our fall concert.



RCS of 2008-2009 with Dr. Jameson Marvin before our fall concert, "Autumn Evensong" in October.

Letter from the President



Dearest Alumnae,

I send you heartfelt greetings from all the members Radcliffe Choral Society. Many thanks to all of those in the area who came out to support "Autumn Evensong," our first concert of the year! This joint concert with the Collegium Musicum was a wonderful success. The Friends of RCS continued their tradition of a rose for every singer, celebrating the first concert, and making the performance that much more special for RCS' newest and oldest members alike.

Our next project is our traditional Holiday Concert with the Harvard Glee Club, for which we are diving into new repertoire with enthusiasm. A little farther on, plans for our Festival of Women's Choruses in February are well under way, and I sincerely hope that many of you will come out to support, not only RCS, but the women's choral community at large. With a spring tour to Georgia and Tennessee, and a combined Holden Choirs' performance of Beethoven's *Missa Solemnis*, we could not have more to look forward to! As always, thank you for your continued support of this organization. Please do not hesitate to contact me with ideas of how we can work together to help RCS grow and change.

Best wishes,

Erin McKenna '09, President of RCS

A Letter from Dr. Jameson Marvin

Dear Alumnae of the Radcliffe Choral Society,

In RCS's 110th year, we are ebullient! We are thriving with enthusiasm, highest morale, dedication and pride, and remarkable student leadership. The warmth, commitment, incredible organization, responsibility and contagious enthusiasm of our leaders – headed by our President, Erin McKenna '09 and Manager, Kavita Kannan '09 – infuses positivism in everything we do. We have the best record of attendance we have ever had. In all, we have 26 women participating as a team working for RCS to make it the best possible choral organization. I am SO proud of their leadership. More importantly, it is essential, and it digs deeply to the core of why RCS over the past number of years has developed into an ensemble whose foundation inspires pride, confidence, and rich well-being.



"The '08-'09 RCS is truly the richest sounding and quickest reading RCS I have ever had!"

Story continued on page 2

Festival of Women's Choruses!

RCS is thrilled to be hosting another Festival of Women's Choruses this year! We take particular pleasure in hosting choral festivals where we can collaborate and share music with other choirs: it gives us a special opportunity not only to hear others perform high-caliber women's choral music, but also encourages the exchange of ideas and enthusiasm between choirs of all ages and sizes, allowing us to strengthen our choral network throughout the country.

This year, we are proud to host the following choirs: Elms City Girls' Choir, Longmeadow High School Choir, the Festival Singers of Newton South High School, Lexington High School Choir, Cornell University Chorus, Wellesley College Glee Club, Vassar College Choir, Amherst College Women's Ensemble, Cappella Clausura, and the Lorelei Ensemble.

The Festival will include a panel discussion featuring composers and publishers of women's choral

music, a master-class for student conductors led by Dr. Jameson Marvin, a lecture on healthy singing given by Sarah Whitten, the Harvard Choral Administrator, and a presentation of newly-published works for treble voices.

The highlight of the Festival will be, of course, three major concerts:

Friday, February 27, 8pm, Lowell Lecture Hall

Saturday, February 28, 4pm, Memorial Church

Saturday, February 28, 8pm, Memorial Church

We warmly invite you to attend the concerts and any of the other events occurring throughout the Festival weekend. In particular, we hope you will attend the RCS Alumnae Brunch hosted on **March 1** by FRCS (see FRCS updates below for more details). We cannot wait to share our music with so many fabulous women's choirs and hope you will join us for this exciting celebration of women's choral music!

Continued
from page 1

To have these women committed to the leadership of RCS is especially important this year, because the Radcliffe Choral Society will sponsor their fourth and largest to-date *Harvard Festival of Women's Choruses* in February – please see the article above about this truly tremendous event! Without the Festival Committee, led by Kavita Kannan, we could not undertake this important and marvelous Festival. The Festival is an expensive undertaking for RCS: *we cordially invite you to give freely (even in this market) to this Festival of Women's Choruses to support RCS in this important endeavor.* The Choral Society is also going to have a spectacular tour to the South: Georgia, Tennessee, and South Carolina. It is already completely organized and ready to go, thanks to the exceptional leadership of Nora Barr '10. We conclude this season with a joint performance with HGC and HRCM, and with professional orchestra and soloists, of Beethoven's monumental *Missa Solemnis* – another event whose scope calls for *generous giving* to RCS.

Last year Kate Woolf (our Assistant Conductor for 4 years) led RCS on an enriching, fun, and musically rewarding tour to Costa Rica. Kate's leadership was remarkable vocally and conduc-

torially, and extremely rewarding for RCS. Enormous gratitude is felt for her by us all. This fall we gave an incredibly polished first concert, singing choral works in eight languages from Palestrina through Hilary Tann, and in two weeks we will sing our traditional Christmas Concert with HGC.

Most important this year has been the addition of our new Assistant Conductor, Beth Willer. Beth is such a marvelous leader, and fabulous conductor. And she has already taken 5 rehearsal this semester, galvanizing RCS with her complete musicianship, warm and authoritative leadership, down-to-earth style, and humor. RCS loves her.

So, in all, I have little to do but choose the repertoire, lead them in rehearsals, conduct them in concerts, take them on Spring Tour, and direct RCS throughout this year. What fun I am having!! It is truly a joy, and by the way, the 46 returnees (a truly remarkable number!) join the best vocal newees (26) we have had, increasing our membership to a steady, consistently exuberant 65. The '08-'09 RCS is truly the richest sounding and quickest reading RCS I have ever had!

Come hear us! And, please give generously to RCS this year – we need and appreciate your support as much as ever.

Warmly,

Jim, Director of Choral Activities



RCSers from '99 through '03 enjoyed a reunion together in San Francisco over the summer! *Michelle Schutz '01, Tamara Spiwak Toub '02, Sarah Linker Sobel '02, Angelina Fryer '03, Sarah Redmond '02, Angela Chien '99, and Jenn Hoang '00.*

RCS Alumnae News!

Had a reunion with RCS friends? Performing again with RCSers? Celebrated an event with RCSers?

Now you know our latest happenings, we'd love to hear from you!

To share your stories in the next newsletter, please email: **historian@radcliffechoralsociety.org**
We'd love to hear your news!



RCSF members presented RCSers with a gift each of a long-stemmed rose before our fall concert in October – a much loved tradition between RCS and RCSF.

Lauren Roller '07, Flora Lindsey-Herrera '05

A Message from the Friends of the Radcliffe Choral Society

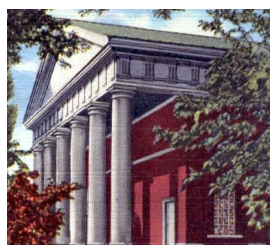
RCS Alumnae Brunch- March 1

The Friends look forward to hosting RCS alumnae and their families for brunch on **Sunday, March 1** in celebration of the Women's Choral Festival of February 27-28. We also hope to include alumnae in a variety of Festival events – workshops, sing-alongs, and receptions – throughout the weekend. If you are interested in participating in RCS alumnae festival events, please e-mail Marianne Cook (cook@post.harvard.edu) and Stephanie Teng (steng@post.harvard.edu). You may also write to FRCS at the address below. FRCS looks forward to seeing you at the Festival!

About the Friends

The Friends of the Radcliffe Choral Society meet several times a year in support of the Choral Society and in support of you, our alumnae. At this time we are actively seeking to expand FRCS activities in order to strengthen the entire Radcliffe Choral Society community and to better celebrate our organization's rich history. If you would like to become involved with FRCS or if you would like to share suggestions or ideas, please contact Wendy Coleman (wendy_coleman@post.harvard.edu) or Elizabeth Bedell (Elizabeth_Bedell@concordacademy.org).

Write to FRCS, c/o RCS Historians
Holden Chapel
Harvard University
Cambridge, MA 02138



*Sisters Chapel,
Spelman College*

Spelman College Glee Club, a women's choir that is the primary performance organization of the college. On March 22, we'll be singing in a worship service as guest of the Georgia Tech Glee Club. On March 23, we'll be performing with Lee University's Concert Chorale as a part of their Presidential Concert Series.

On March 24, we'll be performing at the University of Tennessee at Knoxville. Finally, on March 27, we'll be singing with the Vanderbilt University Concert Choir, a wonderful undergraduate choir that has been on tours ranging from New Orleans to Chicago to Europe. We can't wait to share our awesome repertoire with you all!

We're also looking forward to a number of exciting activities, including a trip to Pidgeon Forge for hiking and shopping (outside of Knoxville), visiting Lookout Mountain in Chattanooga (including a visit to the civil war battlefield there), line dancing at the Wild Horse Saloon in Nashville and paddle boat rides in Knoxville.

Of course, all of the wonderful things listed above could never become reality without the generous contributions of our alumnae. Your support is invaluable to us and we are still in need of both funding and housing (in Atlanta and Nashville). We also welcome all and any advice you may have for us for our travels. And please don't forget the most important way of getting involved: come and hear us sing! For more information about tour, or to provide tour support in the way of advice or housing, please contact our tour manager, Nora Barr: tour2009@radcliffechoralsociety.org

SPRING TOUR, 2009!

Hey **Tennessee and Georgia!** Are you ready? This coming March, RCS will be embarking on an exciting Appalachian adventure through Atlanta, Chattanooga, Knoxville, and Nashville.

We will be singing in five sure-to-be-fabulous concerts where we would love to see and meet local alumnae. On March 21, we'll be performing with the



Atlanta, GA



*Lookout
Mountain,
Chattanooga*

Tour Itinerary

Friday, March 20

Flight to Atlanta

Saturday, March 21, 8pm

Concert with Spelman Glee Club
Sisters Chapel, Spelman College

Sunday, March 22, 10:30am

Concert with the Georgia Tech Glee Club

St. John's United Methodist Church

Monday, March 23, 7:30pm

Concert with Lee University Concert Chorale

Dixon Center, Lee University

Tuesday, March 24, 8pm

Concert at University of Tennessee

James R. Cox Auditorium

Friday, March 27, 7:30pm

Concert with Vanderbilt University Concert Choir
Christ the King Catholic Church

Sunday, March 29

Flight to Boston

Introducing our new Assistant Conductor, Beth Willer!

RCS is extremely pleased to introduce Beth Willer! Beth holds an M.M. in Conducting from Boston University and a B.A. in Music education from Luther College. She has studied with Ann Howard Jones, David Hoose, Bruce Hagen, Weston Noble, Mark Shapiro and in Paris with Phillip Lasser of Julliard. Beginning her third year as a conductor in the Boston area, Beth joins the vocal music staff at the Boston Arts Academy as Director of Choirs. She is also the founding artistic director of Lorelei Ensemble, a women's chamber choir, and since 2006 has conducted Boston University Concert Choir and Women's Chorale, and served as a teaching fellow with the Boston Children's Chorus. Beth is a remarkable musician and we are thrilled to have her with us!

Hi Beth! First things first, where are you from, and how did you decide you wanted to be a choral conductor?

I'm from Huron, South Dakota - home of the World's Largest Pheasant (and just 50 miles from the Corn Palace!). I did NOT grow up on a farm. Though I usually am "the first person people have met from South Dakota," I was excited to meet a South Dakotan in both RCS and Collegium! I think I decided to become a choral conductor in high school because I couldn't



imagine a better way to spend my entire day - I always wanted to be in the music wing. When I tore my ACL in my right knee, I knew my dream to be a professional basketball player was no longer possible... so I guess director of a choir seemed at least as enjoyable, and probably will yield an ultimately longer career. :)

How do you like working with RCS so far?

Absolutely the best part of my week! Even at the end of a long day, I leave rehearsals feeling energized!

Is there anything you've discovered about RCS you weren't expecting?

Not really - definitely all of the talented, intelligent, wonderful people I expected to be working with on a biweekly basis!

What's your favorite thing about working with RCS? Your least?

Favorite - Ockeghem. Least favorite - riding my bike down Mass Ave. on Wednesday during rush hour so I can make it to rehearsal.

What's your favorite kind of music to conduct, sing and to listen to?

The two ends of the spectrum - early and new. I'm especially fond of repertoire for women's chorus, so this has been a great fit!

What's your favorite Marvinism?

"Door-bell" (corresponding with any interval smaller than a fourth that conveniently serves the immediate musical example!)

Do you have a dream concert venue or conducting vision?

Someday, somewhere, I hope to conduct the following: Monteverdi *Vespers*, Victoria *Requiem*, and Handel *Dixit Dominus*.

Anything we don't know about you yet?

I love LOVE grocery shopping, usually followed by marathon cooking and feeding other people (my favorite procrastination).

Upcoming Concert Season 2008~2009

Christmas Concert

with the Harvard Glee Club

~December 13th, 8pm

Pleasant Street Congregational Church

Festival of Women's Choruses

~February 27, 8pm

Lowell Lecture Hall

~February 28, 4 & 8pm

Memorial Church

Arts First: Beethoven's

Missa Solemnis

*with the Harvard Glee Club and the
Harvard-Radcliffe Collegium Musicum*

~May 1, 8pm

Sanders Theatre

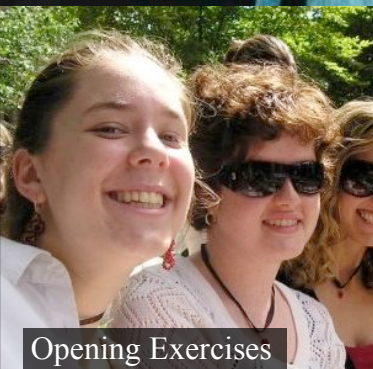
More Photo Highlights from fall '08!



Sing-ins



Post-concert merriment



Opening Exercises



RCSers with President Drew Faust



'Cliffe Notes Fall Jam



Typical RCS social night

Contact us:

Radcliffe Choral Society

Holden Chapel

Harvard University

Cambridge, MA 02138

www.radcliffechoralsociety.org

Questions about the newsletter?

historian@radcliffechoralsociety.org